



SECURE YOUR CARGO

ESSENTIAL STRATEGIES FOR PREVENTING THEFT DURING TRANSIT IN LOGISTICS & SUPPLY CHAIN



THE CHALLENGE OR PROBLEM

Cargo theft is a significant issue for many businesses, leading to financial losses, delays, and operational disruptions. Preventing cargo theft requires a strategic approach to secure your shipments

1. High Risk of Theft

Goods in transit are often targeted by thieves, especially if they are not properly secured or monitored. Thieves look for high-value items and can use various methods to steal them. Without good security, the chance of theft is very high.

2. Operational Disruptions

When goods are stolen, it causes delays and increases costs. Businesses have to replace the stolen items, which takes time and money. This can also upset customers who are waiting for their orders. Dealing with the theft, like filing reports and insurance claims, also takes up valuable time.

3. Financial Losses

Cargo theft directly affects the company's finances. Stolen goods cost a lot of money to replace. Businesses also have to deal with higher insurance premiums and might lose customers who are unhappy with delays. Over time, these financial hits can add up and hurt the business's overall profits.

4. Supply Chain Disruptions

Theft can disrupt the entire supply chain. Missing goods can cause a ripple effect, delaying production schedules and delivery timelines. This can lead to stock shortages and impact other parts of the business.

5. Reputation Damage

Repeated incidents of cargo theft can damage a company's reputation. Customers and partners may see the business as unreliable, leading to a loss of trust and potential future business.

6. Resource Diversion

Time and resources spent dealing with theft—investigations, recovery efforts, and implementing new security measures—divert focus from other important business activities, affecting overall productivity.



THE SOLUTION

Implementing advanced security measures can significantly reduce the risk of cargo theft

1. Record Videos of Everything That Goes Into the Box

Implementing video surveillance at packing stations can serve as a deterrent and provide evidence in case of theft. Cameras can record the packing process, ensuring that there is a visual record of the items being shipped. This can also help in verifying the contents of the shipment and ensuring that the correct items are being sent.

2. Mountable Arm

A mountable arm can be used to securely attach cameras or other monitoring devices to dock doors or other strategic locations. This ensures that the devices are stable and can capture clear footage or data, providing an additional layer of security.

3. Mount Tablet in Packing Station or Dock Doors

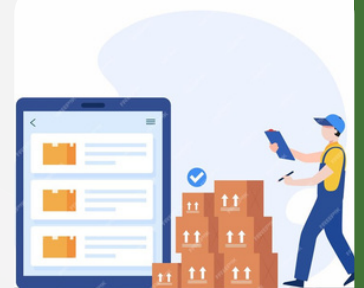
By mounting tablets at packing stations or dock doors, companies can digitize the documentation process. This not only speeds up operations but also ensures that all necessary information is recorded and can be accessed remotely, enhancing security and accountability.

4. Scan QR Code to Capture Data

Using QR codes on packages allows for quick and efficient data capture. Scanning these codes can provide information about the contents, destination, and other relevant details, which can be used to track shipments and ensure they are not tampered with.

5. Captures Videos and/or Photos in a Semi-automated Solution

A semi-automated solution that captures videos or photos can be integrated into the shipping process. This can include motion-activated cameras that record activity around shipments, providing an additional layer of security and a record of any unauthorized access.



BEST PRACTICES FOR PROTECTING GOODS DURING TRANSIT

1. Secure Loading Practices

Use Proper Tools

Secure your load with air pillows, load bars, and straps.

Photo Documentation

Take photos or videos before the truck leaves to document the condition of the shipment.

2. Extra Care for LTL Shipments

Tight Wrapping

Wrap pallets tightly and use the right shrink wrap to protect goods during multiple stops and handling.

3. Use Advanced Security Technologies

GPS Tracking

Track your cargo's location in real-time.

RFID Tags

Monitor and manage your cargo with RFID tags.

Tamper-Evident Packaging

Use special packaging that shows if it's been tampered with, making it harder for thieves to steal without being noticed.

4. Conduct Risk Assessments

Identify Risks

Regularly check for high-risk areas and cargo.

Adjust Security

Change security measures based on these risks.

5. Secure Facilities and Vehicles

Ensure that warehouses, distribution centers, and vehicles are secure. This includes using secure parking areas for trucks, installing security cameras, and ensuring that loading docks are monitored and controlled.

6. Diverse Routing

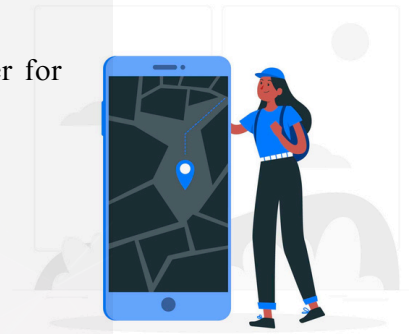
Use multiple routes and schedules to make it more difficult for thieves to predict and target shipments.

7. Documentation and Record Keeping

Maintain accurate records of all shipments, including manifests, bills of lading, and proof of delivery. This documentation can be crucial in the event of a dispute or claim.

8. Customer Awareness

Inform customers about security measures in place and encourage them to report any suspicious activities or incidents.



9. Secure Transportation

Choose carriers with a strong track record for security. Look for features such as locked and sealed trailers, driver background checks, and secure parking facilities.

10. Technology Integration

Integrate technology solutions that can enhance security, such as electronic seals, alarm systems, and real-time video surveillance.

HOW LOADPROOF HELPS WITH CARGO THEFT PREVENTION DURING TRANSIT

LoadProof can play a crucial role in cargo theft prevention by providing a platform that integrates various security features

Real-Time Documentation

LoadProof allows for real-time documentation of shipments, including videos and photos, which can serve as a deterrent to potential thieves and provide evidence in the event of a theft.

Secure Storage

The LoadProof platform securely stores all documentation, ensuring that sensitive information about shipments is protected from unauthorized access.

Enhanced Visibility

By providing real-time updates and tracking, LoadProof enhances visibility throughout the supply chain, making it easier to detect and respond to any irregularities or theft attempts.

Streamlined Reporting

In the event of a theft, LoadProof simplifies the reporting process by providing quick access to all relevant documentation and evidence, aiding in the investigation and recovery process.

Standard Operating Procedure for Protecting Goods from Cargo Theft During Transit Using LoadProof Packing Station

- Create a LoadProof account and complete all necessary configurations.
- Complete the LoadProof Packing Station configuration under the Network Maintenance and Site Update screen in the LoadProof portal.
- Log in as a Packing Station user in the LoadProof Packing Station application (available on Android).
- Map the barcode or QR code scanning machine with the device (pair the device and scanner using the given code).
- Once the scanner is mapped with the device, mount the mobile at the top of the packing station to capture the entire process as a video.



- Now, the user scans the barcode related to that packing box. The code will be scanned, and the user will be notified with a single beep sound, indicating that the video capturing process has started.
- The video will be captured until the configured time, and a double beep sound will notify the user that the video capturing is complete.
- Once video capture is completed, the user can scan the next packing box barcode or QR code. The load will be automatically uploaded to the LoadProof portal under the Packing Station category, sorted by the respective date and time.
- The user can view the uploaded load in the LoadProof portal.
- The user can digitize the uploaded load from the LoadProof portal.

READY TO ENHANCE YOUR CARGO SECURITY?

Schedule a demo with LoadProof today to see how our platform can help prevent cargo theft and streamline your documentation process.

By adopting these innovative solutions and best practices, companies can significantly reduce the risk of cargo theft, safeguard their assets, and maintain the integrity of their supply chain operations.

