



## ENSURING STABILITY

---

### BEST PRACTICES FOR USING LOAD BARS TO PREVENT PALLET TIPPING IN THE WAREHOUSE, LOGISTICS & SUPPLY CHAIN

---



## THE CHALLENGE OR PROBLEM

Ensuring the stability of pallets during transportation and delivery is a critical concern in the logistics and supply chain industry. Without proper measures, pallets can tip over, causing significant issues.



## 1. Product Damage

When pallets tip, the goods can become damaged, resulting in financial losses and potentially harming customer relationships. This damage can lead to costly returns, refunds, or replacements

## 2. Safety Risks

Tipping pallets pose a serious safety risk to delivery workers. Falling pallets can cause injuries, which can lead to lost workdays, increased insurance costs, and potential legal issues.

## 3. Operational Disruptions

Tipped pallets can cause delays in the delivery process. When products need to be reorganized or repackaged due to tipping, it disrupts the workflow and affects the overall efficiency of the supply chain.

## 4. Customer Dissatisfaction

Frequent issues with tipped pallets can lead to customer dissatisfaction. Delays, damaged goods, and safety concerns can tarnish the reputation of the logistics provider and result in lost business.



## THE SOLUTION

Implementing load bars effectively addresses the issue of pallets tipping during transportation and delivery

### 1. Enhanced Stability

Load bars are designed to provide additional pallet support and stabilization. By securing the pallets in place, load bars prevent them from shifting and tipping over during transit. This ensures that the goods remain intact and undamaged upon delivery.

### 2. Safety Improvement

With load bars in place, the risk of pallets tipping and causing injuries is significantly reduced. Workers can handle the deliveries more safely, leading to fewer accidents and a safer work environment. This safety improvement not only protects workers but also reduces liability and associated costs for the company.

### 3. Operational Efficiency

Using load bars helps maintain the organization of goods during transit. Pallets that are securely fastened with load bars do not require reorganization upon arrival, which streamlines the unloading process and enhances overall efficiency. This reduction in handling time allows for quicker turnaround times and more reliable delivery schedules.

### 4. Customer Satisfaction

By ensuring that products arrive in good condition and on time, the use of load bars can enhance customer satisfaction. Reliable deliveries with intact goods improve customer trust and loyalty, leading to repeat business and positive word-of-mouth referrals.

## Best Practices for Using Load Bars

### 1. Implement a Structured Process for Load Bar Utilization

#### Preparation

Ensure that load bars are readily available and in good condition before loading the pallets. Regularly inspect load bars for any signs of wear and tear, such as bends or cracks, to maintain their effectiveness.

#### Proper Placement

Position load bars horizontally across the pallets, securing them tightly to prevent any movement during transit. For taller pallets, use load bars at multiple levels to maintain stability throughout the entire stack. Ensure load bars are placed at both the top and bottom of the pallets for maximum stability.

#### Weight Distribution

Evenly distribute the weight of the goods on the pallets. Place heavier items at the bottom and lighter items on top. Proper weight distribution, combined with the use of load bars, minimizes the risk of tipping and enhances overall stability.



### **Training and Awareness**

Train all personnel involved in the loading and unloading process on the importance and proper use of load bars. Ensure that workers understand how to secure load bars correctly and the benefits they provide in maintaining pallet stability. Provide regular training sessions and refresher courses to keep everyone updated on best practices.

## **2. Ensure Secure and Organized Storage**

### **Designated Storage Area**

Store load bars in a specific area when not in use. This ensures they are easy to access and reduces the risk of damage or loss. Organized storage helps maintain an accurate inventory of load bars, ensuring there are always enough available for use.

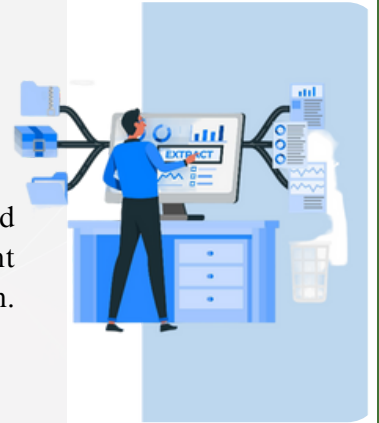
### **Routine Maintenance**

Conduct regular maintenance checks on load bars to ensure they remain in good working condition. Promptly replace any damaged or worn-out load bars to maintain their effectiveness. Implement a schedule for periodic inspections and maintenance activities.

## **3. Continuous Improvement**

### **Regular Audits**

Perform regular audits of the loading and unloading processes to ensure that load bars are being used correctly and consistently. Identify any areas for improvement and implement necessary changes to enhance the effectiveness of load bar utilization. Use audit results to refine training programs and operational procedures.



## **HOW LOADPROOF HELPS WITH LOAD BAR IMPLEMENTATION**

LoadProof enhances the effectiveness of load bar utilization through robust visual documentation and streamlined management processes.

### **Visual Documentation**

LoadProof allows users to easily capture images of pallets secured with load bars using mobile devices. This visual documentation can be uploaded directly to a secure digital repository, providing proof that load bars were used correctly.

### **Metadata Tagging**

LoadProof's platform organizes images with metadata tagging, making it easy to search for and retrieve specific documentation quickly. Tags can include details such as date, time, location, and personnel involved, ensuring comprehensive records.

### **Enhanced Accountability**

By documenting the use of load bars, LoadProof strengthens accountability among supply chain partners. When problems or complaints arise, you can provide proper evidence to support your case. This documentation also ensures that best practices are consistently followed, serving as a valuable resource for training, audits, and quality control, thereby maintaining high standards in pallet stability and safety.

## STANDARD OPERATING PROCEDURE FOR USING LOAD BARS WITH LOADPROOF

Follow these steps to efficiently document the use of load bars with LoadProof, enhancing stability and safety during transportation

- Create a LoadProof account and complete all necessary configuration.
- Log in to the LoadProof Mobile application (Android and iOS).
- Start a new load and capture images of the secured pallets with load bars.
- Check the images in the Gallery screen (users can delete captured images, add notes, or crop the images).
- Select the category where the load needs to be uploaded (e.g., Inbound, Outbound, etc.).
- Enter the input (metadata) for that load.
- Upload the load; it will be uploaded to the LoadProof Portal.
- View the uploaded load in the LoadProof Portal.
- Maintain documentation for training, audits, and quality control.

## READY TO IMPROVE YOUR PALLET STABILITY AND SAFETY?

Schedule a demo with LoadProof today to experience how our platform can help you implement best practices for using load bars and enhance your overall operational efficiency.

Adopting the practice of using load bars is essential for maintaining the stability and safety of pallets during transportation and delivery. This simple yet effective solution not only prevents product damage and safety risks but also enhances operational efficiency and customer satisfaction. By following the structured process and best practices outlined above, logistics and supply chain operations can significantly reduce the challenges associated with pallet tipping. Implementing load bars, combined with documentation through LoadProof, ensures a reliable and efficient approach to handling goods, ultimately leading to a more streamlined and successful supply chain.

